

## > We are DEVELON

We trace our roots to 1937 as one of Korea's first large scale machine plant. Throughout time we have consistently delivered exceptional products and solutions.

DEVELON is a bold name that reflects our core ambition to continue developing onwards and leaving behind a positive footprint in our world. Moving forward, we seek to be part of our customers and partners' endeavor to build a better world.

Powered by **Innovation**



©2024 HD Hyundai Infracore. All rights reserved.  
HDIPBE-01-2507

Certain specification(s) are based on engineering calculations and are not actual measurements. Specification(s) are provided for comparison purposes only and are subject to change without notice. Specification(s) for your individual Develon equipment will vary based on normal variations in design, manufacturing, operating conditions, and other factors. Pictures of Develon units may show other than standard equipment.

[develon-ce.com](http://develon-ce.com)

# DEVELON

Excavator

# DX215LCA-2H



# DESIGN FOR PERFECT WORK



## BEST-IN CLASS PERFORMANCE

- Hydraulic flow summation
- Regeneration system
- Excellent digging forces
- Swing priority



## OPERATOR COMFORT

- Spacious cabin
- Fully adjustable seat
- Enhanced visibility
- User friendly functionality



## IMPROVED FUEL EFFICIENCY

- New ECO mode
- Fuel saving kit
- Electro hydraulic system
- Auto deceleration system
- Efficient breaker mode

## SIMPLIFIED MAINTENANCE

- Easy serviceability
- Extended maintenance
- Large capacity fluid tank
- Low life cycle cost

## INCREASED MACHINE DURABILITY

- Strengthened undercarriage
- Proven upper structure
- Forged ring body
- Reinforced front attachment

## PARTS & SUPPORT

- Genuine parts
- Max parts availability
- On-site product support
- My DEVELON



\*Photo may include optional equipment.

# PERFORMANCE

## PRIDE AT WORK

DEVELON construction equipment strives to build state-of-the-art earthmoving equipment to give every operator maximum performance, more precision, versatile machine preferences, and proven quality. New technologies designed to improve performance and precision make the DEVELON excavator smooth, fast and easy to control. Take pride in your work with DEVELON!



### HYDRAULIC SYSTEM

Electro hydraulic control system provides wide range of flow at various workloads for paramount productivity. Open center design of Main Control Valve (MCV) ensures fast response and maximum efficiency in tough conditions.



### ENGINE

The water cooled, 4 cycle diesel, 6 cylinder in line, direct injection turbocharged, charge air cooled engine is built for power, reliability, efficiency.

The engine is manufactured to perform in a wide range of heat, humidity and dust conditions without compromising productivity.

### CHARGE AIR COOLER

- Cools the air as it passes through turbocharger.
- Resulting in cool high density, bigger mass of air being pumped to engine.
- Increasing the burning efficiency.



### CHOICE OF OPERATING MODE

Working Mode	Advantage
H Mode	<ul style="list-style-type: none"> <li>• Maximum Power</li> <li>• Fast Cycle time</li> </ul>
S Mode	<ul style="list-style-type: none"> <li>• Balance between power and fuel efficiency</li> </ul>
Eco Mode	<ul style="list-style-type: none"> <li>• Better fuel efficiency</li> </ul>
Breaker Mode	<ul style="list-style-type: none"> <li>• Sets pump flow to optimal level and boosts efficiency</li> </ul>



### EFFICIENT COMBINED OPERATION

Inbuilt flow summation system and swing priority function leads to faster swing cycle results in excellent output.



### BEST IN CLASS TRAVEL PERFORMANCE

- Higher traction force
  - Dual travel option
  - High maneuverability
- Traction Force: 21,100 kgf



### DIGGING FORCES

- Higher output even in tough working conditions
- Bucket: 15,600 kgf
  - Arm: 12,500 kgf

\*Photo may include optional equipment.

# FUEL EFFICIENCY

## IMPROVED FUEL EFFICIENCY

Power & working mode options results in excellent fuel efficiency.

## FUEL SAVING KIT

- Monitor undue load and cut down losses.
- Provides better fuel efficiency.



## NEGATIVE FLOW CONTROL

Optimum balance between pump and engine output for better fuel efficiency.



## ONE TOUCH IDLE & AUTO DECELERATION

Prevents fuel losses by reducing engine rpm during no-load condition.

## EXCLUSIVE BREAKER MODE

Excellent fuel saving due to exclusive power for breaker operation.

## ARM REGENERATION SYSTEM

- Smooth operation
- Prevent cavitation
- Increased performance & fuel efficiency



# OPERATOR COMFORT



## OPERATOR DELIGHT

More space, better visibility, powerful air-conditioning and adjustable fully suspension seat, easy to access controls ensure that the operator can work for longer hours without stress or fatigue in the comfortable and safe working environment.



360 degree visibility, fully open sunroof, added side laml & mirror ensure comfortable, safe working environment

## AIR CONDITIONER

- High performance air conditioner
- improved AC ducting,
- Sun visor
- Water bottle cooling system

## OPERATOR SEAT

Easily adjustable fully suspension seat with adjustable arm rest.



## SPACIOUS CABIN

More head room, large space, large door for easy entry and exit.



## INSTRUMENT PANEL

The user-friendly multi language option cluster making it easy to check all critical systems like:

- Hydraulic oil temperature
- Coolant temperature
- Fuel level
- Self diagnostic checks
- Maintenance management
- Optimizing productivity needs ensuring fuel efficiency

# RELIABILITY



## REINFORCED FRONT STRUCTURE

Use of specialized advance steel plates and reinforced design for higher strength and durability.

## ULTIMATE RELIABILITY



Reinforced idler frame



Lower frame belly guard



1 pc cast H link



Reinforced bucket link



## SWING & TRAVEL SYSTEM

Highly efficient DEVELON designed swing and travel system ensure maximum reliability & performance.



HD TRACK LINK



ROCK GUARD



TANK SAFETY COVER



## ELIABLE ELECTRICALS

- Dust and water proof connectors
- Longer component life



## AIR PRE-CLEANER

- Removes dirt and debris from air before entering air filter
- Improves air filter life
- Low maintenance cost



## RUGGED UNDERCARRIAGE

X frame provides excellent resistance to torsional bending to enhance structure life.

# SERVICEABILITY

## LEADING SERVICE INTERVAL

More efficient cooling system which extend service intervals, minimize operating cost and reduce machine down time.

CHANGE INTERVAL	
Hydraulic oil	• 2,000 hrs
Hydraulic filter	• 250 hrs
Engine oil	• 500 hrs
Engine Filter	• 500 hrs

## LARGE LCD MONITOR

Operator can check the machine's vital signs without any difficulties.

- Maintenance Management: Proactive maintenance
- Self Diagnostic: Reduces down time
- Warning Indicator: Ensures safe working



## IMPROVED COOLING EFFICIENCY

- Radiator and oil cooler are arranged in line to maximize efficiency.
- Easily accessible from ground level to clean.



## DURABLE MOUNTING PIN BUSH



## EASY ACCESSIBILITY

Easy access for maintenance means regular checks get done faster. MY DEVELON feature easy service access to increase uptime and reduce operating costs.

# SPECIFICATIONS

## ENGINE

Maker/Model	Cummins6BTAA-5.9C		
Rated flywheel horse power	SAE	J1995(Gross) J1349 (Net)	148 HP (110KW) @2000rpm 145 HP (108KW) @2000rpm
Max Torque	63.7gfm @1300 rpm		
Displacement	5800cc		

## HYDRAULIC SYSTEM

Main pump	Two variable displacement piston pumps		
Type	Two variable displacement piston pumps		
Max. flow	2x220 lpm		
Sub-pump for pilot circuit	Gear pump		
Cross-sensing & fuel saving pump system			

## HYDRAULIC MOTORS

Travel	Two speed axis piston motor with counter balance valve and parking brake
Swing	Axial piston motor with automatic brake

## RELIEF VALVE SETTINGS

Implement Circuit	330kgf/cm <sup>2</sup>
Travel	330kgf/cm <sup>2</sup>
Swing Circuit	240kgf/cm <sup>2</sup>
Pilot Circuit	35kgf/cm <sup>2</sup>
Service valve	Installed

## COOLANT & LUBRICANT CAPACITY

REFILLING	LITER
Fuel tank	340
Engine coolant	25.5
Engine oil	21
Swing device	5
Final drive (each)	5.8
Hydraulic system / Hydraulic tank	260 / 150

## DRIVES & BRAKES

Drive method	Fully hydrostatic type
Drive motor	Axial piston motor in-shoe design
Reduction system	Planetary reduction gear
Max/driving pull	21100kgf (46500 lbf)
Max.travel speed (high/low)	5.3kmph/3.4kmph
Gradeability	35 Degree (70%)
Parking brake	Multi wet disc

## UNDERCARRIAGE

X-Leg type centre frame is integrally welded with reinforced box section track frames. The undercarriage includes lubricated rollers, idlers, track adjusters with shock absorbing spring and sprockets and trackchain with triple grouser shoes.

Centre frame	X-leg type
Track frame	Pentagonal box type
No. of shoes on each side	49
No. of carrier rollers each side	2
No. of track rollers, each side	9
No. of rail guard each side	2

## SWING SYSTEM

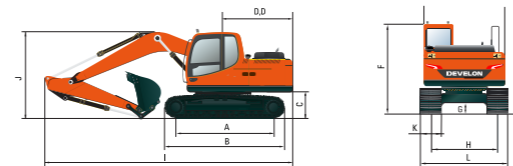
Swing motor	Axial piston motor
Swing reduction	Planetary gear reduction
Swing bearing lubrication	Grease bathed
Swing brake	Multi wet disc
Swing speed	11 rpm

## OPERATING WEIGHT

Shoe Width mm (in)	Operating weight kg (lb)	Ground pressure kgf/cm <sup>2</sup> (psi)
600 mm (24")	22,200 (48,942)	0.47 (6.68)

## DIMENSIONS

(mm)

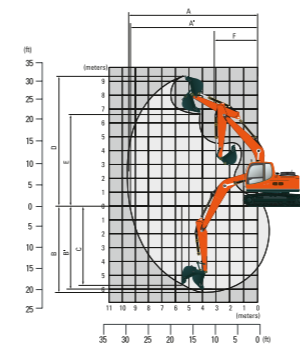


A	Tumbler distance	3640
B	Overall length of crawler	4440
C	Ground clearance of counter weight	1060
D	Tail swing radius	2830
D'	Rear-end length	2770
E	Overall width of upper structure	2700
F	Overall height of cabin	2920
G	Min. ground clearance	480
H	Track gauge	2390
I	Overall length	9570
J	Overall height of boom	3110
K	Track shoe width	600
L	Overall width	2990

## WORKING RANGES

(mm)

<b>Arm length (std.)</b>	2400	2920	<b>Boom length (std.)</b>	5680
A	Maximum Digging Reach	9480	9950	
A'	Digging Reach on Ground	9300	9780	
B	Max Digging Depth	6050	6570	
B'	Max Digging Depth (8' level)	5840	6390	
C	Vertical Wall Digging Depth	5100	5710	
D	Maximum Digging Height	9470	9720	
E	Maximum Dumping Height	6670	6910	
F	Minimum Swing Radius	3580	3510	



Bucket Digging Force 15600kgf

Arm Crowd Force 12500kgf

# LIFTING CAPACITIES

## LIFTING CAPACITIES DX215LCA-2H

Rating over-front Rating over-side

Boom: 5.68 m (18' 8") / Arm: 2.4 m (7' 10") / Shoe: 600mm(24") triple grouser with 3800 kg (8,308 lb) counterweight

Load point height m (ft)	Load radius										At max. reach			
	1.5 m (5.0 ft)		3 m (10.0 ft)		4.5 m (15 ft)		6.0 m (20.0 ft)		7.5 m (25.0 ft)		Capacity	Reach		
7.5m (24.6ft)	kg										*3970	*3970	5.7	
	lb										*8750	*8750	(18.7)	
6.0m (19.7ft)	kg						*3900	*3900			*3920	3470	6.91	
	lb						*8600	*8600			*8640	7650	(22.7)	
4.5m (14.8ft)	kg				*5070	*5070	*4320	*4320	*4010	2890	*3950	2780	7.64	
	lb				11180	11180	*9520	*9520	*8840	6370	*8710	6130	(25.1)	
3.0m (9.8ft)	kg				*6630	6490	*5020	4080	*4280	2770	4150	2440	8.02	
	lb				*14620	14310	*11070	8990	*9440	6110	9150	5380	(26.3)	
1.5m (4.9ft)	kg				*8060	5910	*5740	3810	4540	2640	3990	2310	8.11	
	lb				*17770	13030	*12650	8400	10010	5820	8800	5090	(26.6)	
0.0m (0.0ft)	kg				*6120	*6120	*8790	5630	6240	3620	4440	2550	7.9	
	lb				*13490	*13490	*19380	12410	13760	7980	9790	5620	(25.9)	
-1.5m (-4.9ft)	kg				*11080	*11080	*8810	5570	6250	3560		4520	2590	7.39
	lb				*24430	*24430	*19420	12280	13780	7850		9960	5710	(24.2)
-3.0m (-9.8ft)	kg				*11680	11570	*8120	5670	*5870	3620		5250	3230	6.49
	lb				*25750	25510	*17900	12500	*12940	7980		*11570	7120	(21.3)
-4.5m (-14.8ft)	kg				*8970	*8970	*6300	5970				*5510	5080	5.00
	lb				*19780	*19780	*13890	13160				*12150	11200	(16.4)

Boom: 5.68m (188")/Arm: 2.92m (7' 10")/Bucket 1.05m3/600mm Triple Grouser Shoe with 3800kg CWT

Load point height m (ft)	Load radius										At max. reach				
	1.5 m (4.9 ft)		3.0m (9.8ft)		4.5m (14.8ft)		6.0m (19.7ft)		7.5m (24.6ft)		Capacity	Reach			
7.5m (24.6ft)	kg										*2690	*2690	6.44		
	lb										*5930	*5930	(21.1)		
6.0m (19.7ft)	kg							*3400	*3400	*2630	*2630	*2540	*2540	7.53	
	lb							*7500	*7500	*5800	*5800	*5600	*5600	(24.7)	
4.5m (14.8ft)	kg							*3870	*3870	*3630	2950	*2540	*2540	8.20	
	lb							*8530	*8530	*8000	6500	*5600	5400	(26.9)	
3.0m (9.8ft)	kg				*9610	*9610	*5970	*5970	*4630	4170	3980	2810	*2670	2170	8.56
	lb				*21190	*21190	*13160	*13160	*10210	9190	8770	6190	*5890	4780	(28.1)
1.5m (4.9ft)	kg				*5920	*5920	*7570	6090	*5440	3870	4400	2660	*2940	2050	8.64
	lb				*13050	*13050	*16690	13430	*11990	5830	9700	5860	*6480	4520	(28.3)
0.0m (0.0ft)	kg				*6910	*6910	*8590	5710	*6070	3650	4430	2540	*3400	2070	8.45
	lb				*15230	*15230	*18940	12590	*13380	8050	9770	5600	*7500	4560	(27.7)
-1.5m (-4.9ft)	kg	*6250	*6250	*10050	*10050	*8880	5580	6240	3550	4370	2490	3980	2260	7.97	
	lb	*13780	*13780	*22160	*22160	*19580	12300	13760	7830	9630	5490	8770	4980	(26.1)	
-3.0m (-9.8ft)	kg	*9780	*9780	*12630	11450	*8490	5620	6120	3560			4760	2730	7.15	
	lb	*21560	*21560	*27840	25240	*18720	12390	13490	7850			10490	6020	(23.4)	
-4.5m (-14.8ft)	kg			*10420	*10420	*7180	5820					*5160	3900	5.83	
	lb			*22970	*22970	*15830	12830					*11380	8600	(19.1)	

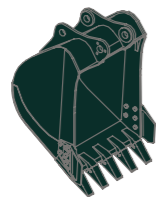
- Lifting capacity are based on ISO 10567.
- Lifting capacity of the Robex Series does not exceed 75% of tipping load with the machine on firm, level ground or 87% of full hydraulic capacity.
- The Lift-point is a hook (standard equipment) located on the back of the bucket.
- (\*) indicates the load limited by hydraulic capacity.

# SPECIFICATIONS

## BUCKETS

All buckets are welded with high-strength steel.

### GENERAL PURPOSE



0.92 m<sup>3</sup> (1.20 yd<sup>3</sup>)

### HEAVY DUTY



0.95 m<sup>3</sup> (1.25 yd<sup>3</sup>)

Capacity m <sup>3</sup> (yd <sup>3</sup> )		Width mm (in)		Weight kg (lb)	Recommendation mm (ft.in)	
SAE heaped	CECE heaped	Without side cutters	With side cutters		5,680 (18' 8") Boom	
					*2,400 (7' 10") Arm	2,920 (9' 7") Arm
0.92 (1.20)	0.8 (1.04)	1098 (43.2)	1259 (49.5)	757(1,668)	●	■
⊙ 0.95 (1.25)	0.83 (1.09)	1240 (44.9)	-	1026(2,262)	●	■

\* : Standard backhoe bucket  
⊙ : Rock-Heavy duty bucket

- Applicable for materials with density of 2.000 kg/m<sup>3</sup> (3,370 lb / yd<sup>3</sup>) or less
- Applicable for materials with density of 1.600 kg/m<sup>3</sup> (2,700 lb / yd<sup>3</sup>) or less

## ATTACHMENT

Boom and arms are welded with a low-stress, full-box section design 5.68m (18' 8") mono boom and 2.4m (7' 10"), 2.92m (9' 7") Arms available. Buckets are all-welded, high-strength steel equipments.

## DIGGING FORCE

Arm	Length Weight	mm(ft.in)	*2,400 (7' 10")	2,920 (9' 7")
		kg(lb)	720 (1,590)	750 (1,650)
Bucket digging force	SAE	kN	133.4	133.4
		kgf	13,600	13,600
		lbf	29,980	29,980
	ISO	kN	153	154
		kgf	15,600	15,700
		lbf	34,390	34,610
Arm crowd force	SAE	kN	117.7	99
		kgf	12,000	10,100
		lbf	26,460	22,270
	ISO	kN	122.6	103
		kgf	12,500	10,500
		lbf	27,560	23,150

Note: Arm weight includes bucket cylinder and linkage \*Standard arm

# STANDARD & OPTION

## Standard Equipment

ISO standard cabin  
All-weather steel cab with all-around visibility  
Safety glass windows  
Sliding fold-in front window  
Sliding side window  
Air-conditioner (5000kcal/hr, 20000 BTU/hr)  
Accessory box & Ashtray

## Computer Aided Power Optimization (New CAPO) system

3-power mode, 2-work mode  
Auto deceleration & one touch deceleration system  
Auto engine overheat prevention system  
Self diagnostic system  
Centralized monitoring

LCD display  
Engine speed  
Clock & Error code  
Mobile charging point  
Fuel level gauge  
Engine coolant temperature gauge  
Hyd. oil temperature gauge

## Warning

Fuel level  
CPU  
Engine oil pressure  
Engine coolant temperature  
Hyd. oil temperature  
Low battery  
Air cleaner clogging  
Door and cab locks, one key  
One outside rearview mirror  
Dual channel fully adjustable suspension seat  
Slidable joystick, pilot-operated  
Two front working lights and two cabin work lights  
Electric horn  
Batteries (2 × 12V × 100 AH)  
Battery master switch  
Removable clean out screen for oil cooler  
Automatic swing brake  
Removable reservoir tank  
24V Power Socket

Fuel pre-filter  
Boom holding system  
Arm holding system  
Counter weight (3800kg)  
Radio / USB player  
Mono boom (5.68m, 18' 8")  
Arm (2.4m, 7' 10")  
Standard bucket (1.05GP m<sup>3</sup>, 1.37 yd<sup>3</sup>)  
Track shoes (600mm, 24")  
Track rail guard  
Cabin front protector  
Operator kit  
Tool kit