

DEVELON

Log Loaders / Road Builder

DX230LL-7M / DX230RB-7M

DX320LL-7M / DX320RB-7M



BUILT FOR EXTREME WORKING CONDITIONS.



DEVELON has a strong history of meeting the needs of owners and operators in the challenging timber industry.

Our lineup of reliable log loaders includes durable components and powerful features designed for superior performance, productivity and safety.

*Photos may include optional equipment.

OPERATOR COMFORT

- Optional Forestry Cab
- 4-Foot Cab Riser for Increased Visibility
- Spacious Cab
- Automotive-Style Heat and Air Conditioning
- Selectable Control Pattern

DURABLE CONSTRUCTION

- High-Walker Undercarriage
- Heavy-Duty Upper Structure
- Quarter-Inch Side Panels

POWERFUL PERFORMANCE

- Selectable Power Modes
- Maximized Lifting Capacity
- Optimized Horsepower
- Fast Cycle Times

SMART TECHNOLOGY

- Standard Rearview Camera
- DEVELON Fleet Management Telematics
- Mechatronics Design

ROAD BUILDER CONFIGURATION AVAILABLE

- High, Wide Undercarriage
- Heavy-Duty Track Links
- Full-Length Guiding Guards
- Attachment Versatility

Your Local Dealer Is Dedicated to Your Success.

Your local DEVELON dealer is here for you: helping to solve your unique business challenges and advance the development of your community. Our dealers provide a full lineup of highly productive and fuel-efficient equipment, outstanding value and comprehensive services to help build your success.

EXPANDING EQUIPMENT LINEUP

DEVELON continues to expand our innovative and durable lineup of equipment, providing more of the resources you need to take on a variety of projects and expand your business. Talk with your dealer to find the right equipment, attachments and technologies to move ahead.

AUTHORIZED DEVELON SERVICE TECHNICIANS

You can count on experienced and highly skilled professional technicians from your local dealership to keep your valuable DEVELON equipment running at peak performance. You'll get responsive service, reliable parts and trusted advice.



FAST, POWERFUL AND EFFICIENT.



DEVELON log loaders are developed specifically to make every phase of forestry work more productive. Reliable hydraulics, high horsepower and superior torque characteristics help you move more timber per day.

HIGH SWING TORQUE

DEVELON log loaders' strong and productive swing torque allows them to swing heavy logs quickly, even when moving the load uphill.

LIFTING CAPACITY

Lift more weight with each cycle and complete jobs faster. With an optimal loading reach, loading height and lift position, you can lift and place logs with confidence.

FAST CYCLE TIMES

Two variable-displacement axial piston pumps with regeneration deliver superior hydraulic flow and pressure that maximize cycle times and efficiency. The robust hydraulics deliver ample power to the work group and attachment to quickly load trucks.

MORE HORSEPOWER

Optimized horsepower gives you better performance for tough forestry applications, from harvesting and shovel logging to sorting and loading.

FUEL EFFICIENCY

The DEVELON log loader's efficient horsepower curve delivers increased torque while using less fuel. Its high-pressure common-rail (HPCR) fuel injection system aids in reducing emissions and allows the Tier 4-compliant diesel engine to save fuel and improve performance. and place logs with confidence.

The Mechatronics Design maximizes machine productivity and optimizes fuel consumption. It connects the log loader hydraulic system and engine controls via a data transfer link and has four power modes.

ONE-TOUCH POWER BOOST

The convenient button on the righthand joystick provides a momentary hydraulic boost when more lifting power is needed. (Available on DX225LL-5 and DX300LL-5 models.)



HIGH SWING TORQUE

Take control of your log loader's performance when pioneering a tract and sorting or loading logs. Manage the balance of fuel consumption and machine power, and customize performance to the task.

- **Power + mode** for increased efficiency when loading trucks.
- **Power mode** for improved productivity when loading trucks and fast travel speed to save time.
- **Standard power mode** for optimizing fuel consumption and delivering high performance for lifting.
- **Economy mode** for reduced fuel consumption on low-demand applications and slowing down machine movement on tasks that require extra precision.

The standard **auto idle** feature automatically idles the engine when machine functions are not used for up to four seconds. This reduces noise, improves job site communications and saves fuel. When you move the controls, the log loader automatically returns to your previous throttle setting.

When **auto shutdown** is enabled, operators can configure the idle time before the log loader shuts down automatically — from three to 60 minutes — to save valuable fuel for more productive operation.

When turning, pushing and maneuvering, **auto downshift** reduces hydraulic flow to the drive system to improve machine responsiveness and controllability. When the load decreases, the log loader automatically shifts into high range.

A **straight travel pedal option** allows you to travel in a straight line more easily, increasing your efficiency during travel.

BUILT AS TOUGH AS THE TOUGHEST ENVIRONMENTS.

With roots in performance and strength, DEVELON log loaders are designed to withstand the unique challenges of demanding forestry work. Protected with solid construction and heavy-duty features, they keep you running longer with minimal downtime and fewer service calls.

FULLY GUARDED, HIGH-WALKER UNDERCARRIAGE

DEVELON log loaders are equipped with a stable, fully guarded, heavy-duty, high and wide undercarriage. Durable top rollers and special cleanout brackets keep you mobile and productive. The tracks feature heavy-duty links with double grouser shoes and full-length track guiding guards. Standard rock guards protect tracks from debris, and an improved front guard further protects log loader components.

UPPER STRUCTURE

Forestry protection extends to the upper structure. Machine guarding includes mainframe reinforcement with full under-house plate guarding, boom cylinder guard, integral catwalks, heavy-duty side doors with guarding over the hydraulic pump and cooling system doors, along with the undercarriage guarding. The cab features a 4-foot riser with robust front and top guarding, providing protection without sacrificing visibility. The cab also features hydraulic tilting for transport.

FRONT GUARD AND FRONT CYLINDER GUARDING

A front guard protects log loader components from the debris and obstacles encountered on the job. A robust guard protects both the boom and arm from the debris and obstacles.

QUARTER-INCH SIDE PANELS

These thick-skinned log loaders are made to withstand the shocks and impacts encountered on logging job sites, protecting your machine's vital components for maximum uptime.

PERMANENTLY SEALED, LUBRICATED TRACK PINS

Pin links are permanently sealed. They never need greasing, helping to reduce your operating costs and increase your uptime.



AIR-TO-AIR FUEL COOLER

The air-to-air fuel cooler reduces fuel temperature to increase your machine's overall efficiency and protect engine components.

VARIABLE-SPEED COOLING FAN

On the DX230LL-7M and DX320LL-7M the hydraulic oil cooler uses a variable-speed cooling fan. The fan speed changes as required by the demands of your log loader. When doing harder work, the fan runs faster for optimized cooling. When you're in lighter-duty conditions, the fan runs slower to increase efficiency and reduce noise.

SPLIT COOLING

The split cooling system on the DX230LL-7M and DX320LL-7M allows the oil cooler and radiator to operate independently to ensure optimal hydraulic system and engine temperatures, even in severe working conditions. The system increases cooling capacity while protecting and extending the life of engine components.

*Photos may include optional equipment.

FOCUSED ON IMPROVING OPERATOR PRODUCTIVITY.

When you're comfortable, you're more productive. DEVELON log loaders deliver the comfort, control and visibility required for you to remain focused and do your best work — even on the most challenging days.

COMFORTABLE CAB

- The larger, all-weather steel cab combines superior comfort, excellent visibility, low noise levels and a roomy environment. The reclining suspension seat adjusts to your height and weight and features adjustable head and armrests. Joystick controls move up and down for more ergonomic operation to reduce operator fatigue.
- The optional side-entry forestry cab is certified for Oregon OSHA and British Columbia WCB standards. It features a guarded polycarbonate front window, polycarbonate side and rear windows and a rear secondary exit.

QUIET OPERATION

A complete, sound-isolating cabin seal reduces the noise inside the pressurized cab to an extremely low level. Compartmentalized components reduce noise output outside the cab. Even the cabin frame and seat are designed to absorb vibration and significantly increase operator comfort.

VISIBILITY

Sightlines are critical for operator performance, and DEVELON log loaders provide the best possible view from inside the cab.

- The guarded, 4-foot cab riser provides a vantage point over the truck for superior productivity when loading, and the cabin has large front and side windows, narrow corner pillars with small window joints, and a pillar-mounted wiper.
- Optional LED front and rear working lights help you spot obstacles when there is little sunlight, before sunrise or after sunset.
- Protect your machine and increase safety with the standard rearview camera. An optional side camera is available, and both cameras can be viewed at once on the LCD panel. This increase operator comfort.



MY DEVELON

Telematics Service (OPTIONAL)

TELECOMMUNICATIONS Data flow from machine to web



TELEMATICS TERMINAL

The terminal device is installed and connected to a machine to get machine data.

TELECOMMUNICATION

DEVELON provides Dual mode (Cellular, Satellite) communication to maximize communication coverage

MY DEVELON

Users can monitor the machine status from DEVELON Website & Mobile App

TELEMATICS SERVICE BENEFITS DEVELON and dealer support customers to improve work efficiency with timely and responsive services

CUSTOMER

Improve work efficiency

- Timely and preventive service
- Improve operator's skills by comparing work pattern
- Manage fleet more effectively

DEALER

Better service for customers

- Provide better quality of service
- Maintain machine value
- Better understanding of market needs

DEVELON

Responsive to customer's voice

- Utilize quality-related field data
- Apply customer's usage profile to developing new machine

MAIN FUNCTIONS (WEB/APP) DEVELON Telematics Service provides various functions to support your great performance



OPERATION

You can easily access and manage equipment information and maintenance costs on the platform anytime, anywhere. Retrieve details such as location, uptime, utilization, and fuel costs based on field data, enabling efficient work planning by considering the progress at the job site.



HEALTH

Based on reliable manufacturer information, you can have checklists for each usage cycle and receive replacement cycle reminders for consumable parts. In the event of equipment defects, you will receive notifications and can request service immediately. This ensures swift service support from certified DEVELON dealers and minimizes machine idle time.



E-COMMERCE

You can purchase a variety of digital products and certified genuine parts for your equipment online. Elevate your experience by subscribing to our exclusive digital services.



LIBRARY

Saving your time to find all the documents about your equipment. We provide monthly operation reports, manuals, parts books and more. This helps you to access to a wide range of information and knowledge of your equipment.

*This service can be accessed in certain countries, and the scope of service may differ depending on your country and region.

GLOBAL PARTS NETWORK

QUALITY-PROVEN MAIN COMPONENTS

Develon provides fast and precise worldwide delivery of genuine Develon parts through its global PDC (parts distribution center) network.



GLOBAL NETWORK

The global network of the GPDC (Global Parts Distribution Center) maximizes its fill rate by making sure that each center is stockpiled with all the critical parts required for businesses in its area. The network also minimizes the time and costs required for parts delivery by positioning PDCs close to major markets around the world. Develon PDCs communicate with customers in their time zone, informing them that they are open for operation, and deliver parts to them as early as possible.

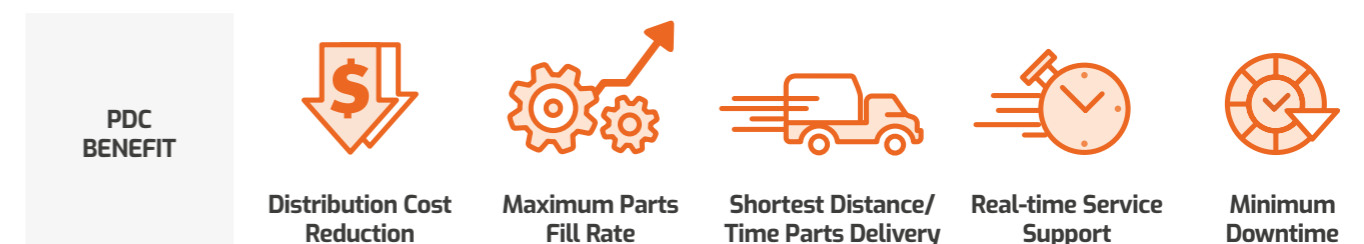
THE GLOBAL PARTS DISTRIBUTION CENTER NETWORK

PDCs had been set up as shown below, including Mother PDC in Ansan, Korea. The ten other PDCs include one in China (Yantai), three in USA (Atlanta, Seattle and Miami), two in Europe (Belgium and the UK), one in the Middle East (Dubai), two in Asia (Singapore and Indonesia) and one in Brazil (São Paulo).



MPDC : Mother Parts Distribution Center

PDC : Parts Distribution Center



ROAD BUILDER CONFIGURATION: THE STRENGTH TO PIONEER.

The DX230RB-7M and DX320RB-7M road builder configurations are designed to excel at the tasks required for pioneering and clearing a new tract, such as clearing felled trees in preparation for building a logging road. Many unique features optimize road builder configurations to handle this important job.



PREMIUM FEATURES COME STANDARD ON DEVELON ROAD BUILDER.

By including these premium features as standard, DEVELON gives you a competitive edge – helping operators work more efficiently and improving safety during the longest workdays.

One-Touch Power Boost	Momentarily increases hydraulic power when more lifting power is needed.
Rearview Camera	The rearview camera provides the operator with an additional view of the Road Builder's surroundings, increasing confidence and productivity.
Quarter-Inch-Thick Side Panels	Thick-skinned Road Builder's withstand shocks and impacts to protect the machine's vital components.
Radio and MP3 Audio	Cab features include a radio and MP3 audio.
LCD Monitor	Multi-function color monitor displays critical machine information, including the view from the standard rearview camera.
Air-Suspension Seat	Suspension adjusts to match changing working conditions.
Centralized Boom Grease Points	Maintenance is convenient thanks to centralized grease banks on the base of the boom.



TRADITIONAL EXCAVATOR BOOM AND ARM AND HIGH AND WIDE UNDERCARRIAGE

- The larger, all-weather steel cab combines superior comfort, excellent visibility, low noise levels and a roomy environment. The reclining suspension seat adjusts to your height and weight and features adjustable head and armrests. Joystick controls move up and down for more ergonomic operation to reduce operator fatigue.
- The optional side-entry forestry cab is certified for Oregon OSHA and British Columbia WCB standards. It features a guarded polycarbonate front window, polycarbonate side and rear windows and a rear secondary exit.

STANDARD CAB OR OPTIONAL FORESTRY CAB

Road builders are available with a standard-height cab or optional forestry cab that provides an ideal vantage point for pioneering, offering an excellent view of the work and great all-around visibility. The road builder cab includes all the comfort features operators need to stay productive and focused on the job. The optional side-entry forestry cab features a guarded polycarbonate front window, polycarbonate side and rear windows and a rear secondary exit.

COUPLER OPTIONS FOR ATTACHMENT VERSATILITY

DEVELON couplers enable you to improve versatility and productivity by utilizing buckets along with a thumb to tackle the full range of pioneering tasks, such as clearing felled trees, removing stumps, rough grading and site drainage

ATTACHMENT MANAGEMENT

Via the LCD screen, you can configure different attachment presets to limit the maximum pressure and the minimum / maximum flow rate delivered to the attachment. Password protection prevents improper attachment preset selection for operators with limited understanding of hydraulic systems.

TECHNICAL SPECIFICATIONS DX230LL-7M(LL)

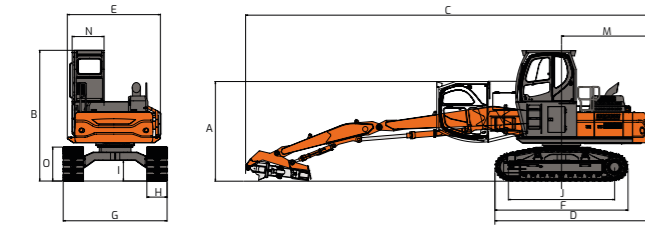
ENGINE

Model	Develon DL06A
No. of cylinders	6
Rated power	129.4 kW at 1,800 rpm (SAE J 1995, Gross) 173.4 HP (175.8 PS) 126.5 kW at 1,800 rpm (SAE J 1349, net) 169.5 HP (171.9 PS)
Max. torque	784.5 N.m at 1,400 rpm
Piston displacement	2-120 cc / rev
Bore & stroke	100 mm x 125 mm
Starter	24 V / 6.0 kW
Batteries	2 x 12 V / 150 Ah
Air cleaner	Double element and pre-filtered turbo with auto dust evacuation

DRIVE

Travel speed (high/low)	4.2 / 2.4 km/hr
Maximum traction force	24.7 / 12.9 ton
Maximum grade	35° / 70%

DIMENSIONS



A	Shipping Height	3,530 mm (11' 7")
B	Overall Height	4,620 mm (15' 2")
C	Shipping Length	13,850 mm (45' 5")
D	Shipping Length (w/o Attachment)	5,725 mm (18' 9")
E	Upper Structure Width	3,325 mm (10' 11")
F	Track Length	4,635 mm (15' 2")
G	Shipping Width	3,600 mm (11' 10")
H	Track Shoe Width	700 mm (2' 4")
I	Car Body Clearance (w/o Grouser)	674.5 mm (2' 3")
J	Tumbler Distance	3,680 mm (12' 1")
M	Tail Swing Radius	3,155 mm (10' 4")
N	Cab Guard Width	1,105 mm (3' 8")
O	Track Height (w/o Grouser)	1,105 mm (3' 8")

HYDRAULIC SYSTEM

Main pump	Swash plate, axial piston pump Max flow: 2 x 213.5 l/min
Pilot pump	Gear pump - max flow: 24.7 l/min
Maximum system pressure (work/travel)	350 / 360 kg/cm ²

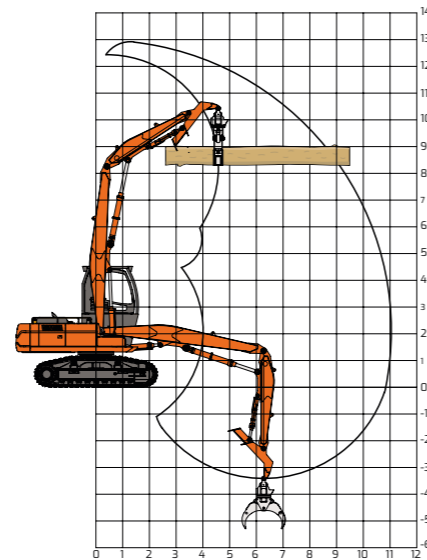
HYDRAULIC CYLINDERS

Cylinders	Quantity	Bore x Rod diameter x Stroke
Boom	2	140 x 95 x 1,143 mm
Arm	1	165 x 115 x 1,396 mm
Heel	1	115 x 75 x 915 mm

UNDER CARRIAGE

Number of rollers and track shoes per side
Upper rollers: 2
Lower rollers: 9
Shoes: 45
Track Length: 4,635mm

WORKING RANGES



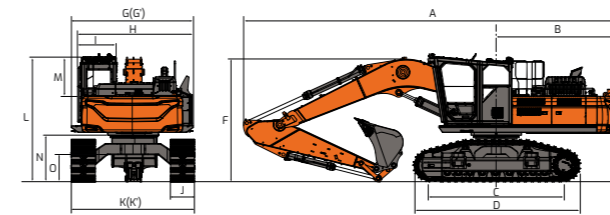
Max. working reach	10,995 mm (36' 1")
Max. working depth	3,445 mm (11' 4")
Max. working height	12,885 mm (42' 3")
Rear swing radius	3,155 mm (10' 4")
Min. swing radius	3,700 mm (14' 2")

TECHNICAL SPECIFICATIONS DX230RB-7M(RB)

HYDRAULIC CYLINDERS

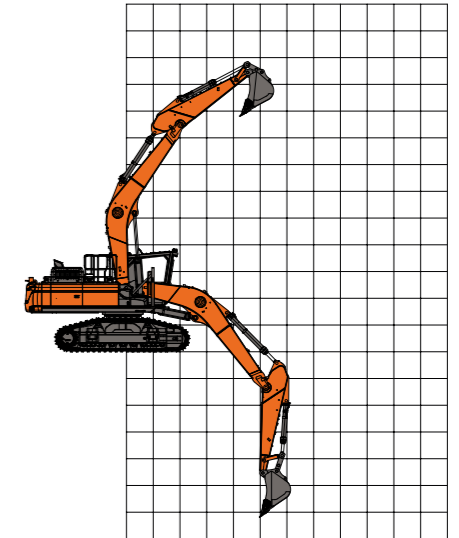
Cylinders	Quantity	Bore x Rod diameter x Stroke
Boom	2	125 x 85 x 1,263 mm
Arm	1	140 x 100 x 1,443 mm
Bucket	1	120 x 80 x 1,060 mm

DIMENSIONS



Boom Type		5.7 m (18' 8")	
Arm Type		2.9 m (9' 6")	3.5 m (32' 5")
A	Shipping Length	9,770 mm (32' 1")	9,870 (32' 5")
B	Tail Swing Radius	3,155 mm (10' 4")	
C	Tumbler Distance	3,680 mm (12' 1")	
D	Track Length	4,635 mm (15' 2")	4,600 (15' 1")
E	Countweight Clearance (w/o Grouser)	1,260 mm (4' 2")	4,600 (15' 1")
F (Boom)	Shipping Height	2,920 mm (9' 7")	4,600 (15' 1")
F (Hose)	Shipping Height	3,020 mm (9' 11")	4,600 (15' 1")
G	Shipping Width	3,600 mm (11' 10")	
G'	Shipping Width (narrow)	-	
H	House Width	3,325 mm (10' 11")	
I	Cab Width	1,010 mm (3' 4")	
J	Shoe Width	700 mm (2' 4")	
K	Undercarriage Width	3,600 mm (11' 10")	
L	Height Over Cab	3,340 mm (10' 11")	3,320 (10' 11")
M	Cab Height Above House	930 mm (3' 7")	
N	Track Height (w/o Grouser)	1,105 mm (3' 8")	1,095 (3' 7")
O	Car Body Clearance (w/o Grouser)	675 mm (2' 3")	670.5 (2' 2")

WORKING RANGES



Arm Type	mm	2,900	3,500
Max. Digging Reach	mm	9,880	10,385
Max. Digging Depth	mm	6,375	6,985
Max. Digging Height	mm	9,760	9,860
Min. Swing Radius	mm	3,560	3,620

TECHNICAL SPECIFICATIONS DX320LL-7M(LL)

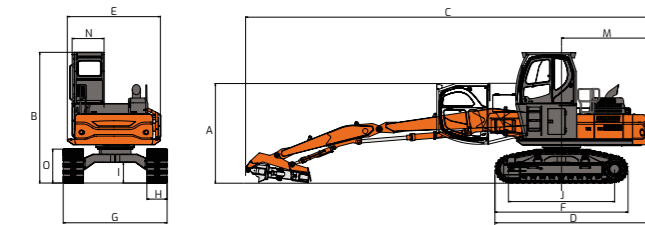
ENGINE

Model	Develon DL08A
No. of cylinders	6
Rated power	202 kW at 1,800 rpm (SAE J 1995, Gross) 270.9 HP (274.6 PS) 198.8 kW at 1,800 rpm (SAE J 1349, net) 266.6 HP (270.3 PS)
Max. torque	1,275 N.m at 1,500 rpm
Piston displacement	7,640 cc
Bore & stroke	108 mm x 139 mm
Starter	24 V / 6.0 kW
Batteries	2 x 12 V / 150 Ah
Air cleaner	Double element

DRIVE

Travel speed (high/low)	4.9 / 3.0 km/hr
Maximum traction force	37.9 / 23.1 ton
Maximum grade	35° / 70 %

DIMENSIONS



A	Shipping Height	3,680 mm (12' 1")
B	Overall Height	4,580 mm (15' 0")
C	Shipping Length	14,770 mm (48' 5")
D	Shipping Length (w/o Attachment)	6,035 mm (19' 10")
E	Upper Structure Width	3,575 mm (11' 9")
F	Track Length	4,965 mm (16' 3")
G	Shipping Width	3,600 mm (11' 10")
H	Track Shoe Width	700 mm (2' 4")
I	Car Body Clearance (w/o Grouser)	760 mm (2' 6")
J	Tumbler Distance	4,010 mm (13' 2")
M	Tail Swing Radius	3,560 mm (11' 8")
N	Cab Guard Width	1,010 mm (3' 4")
O	Track Height (w/o Grouser)	1,190 mm (3' 11")

HYDRAULIC SYSTEM

Main pump	Tandem, piston pump Max flow: 2 x 288 l/min
Pilot pump	Gear pump - max flow: 27 l/min
Maximum system pressure (work/travel)	330 / 340 kg/cm ²

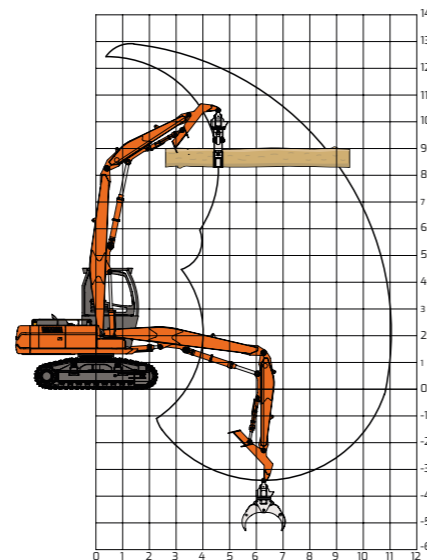
HYDRAULIC CYLINDERS

Cylinders	Quantity	Bore x Rod diameter x Stroke
Boom	2	150 x 100 x 1,190 mm
Arm	1	180 x 120 x 1,405 mm
Heel	1	150 x 100 x 1,010 mm

UNDER CARRIAGE

Number of rollers and track shoes per side	Upper rollers: 2 Lower rollers: 9 Shoes: 45 Track Length: 4,965 mm
---	---

WORKING RANGES



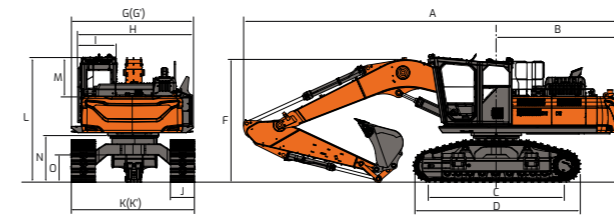
Max. working reach	11,570 mm (38' 0")
Max. working depth	3,738 mm (12' 3")
Max. working height	13,135 mm (43' 1")
Rear swing radius	3,559 mm (11' 8")
Min. swing radius	4,450 mm (14' 7")

TECHNICAL SPECIFICATIONS DX320RB-7M(RB)

HYDRAULIC CYLINDERS

Cylinders	Quantity	Bore x Rod diameter x Stroke
Boom	2	140 x 95 x 1,440 mm
Arm	1	150 x 95 x 1,440 mm
Bucket	1	135 x 90 x 1,150 mm

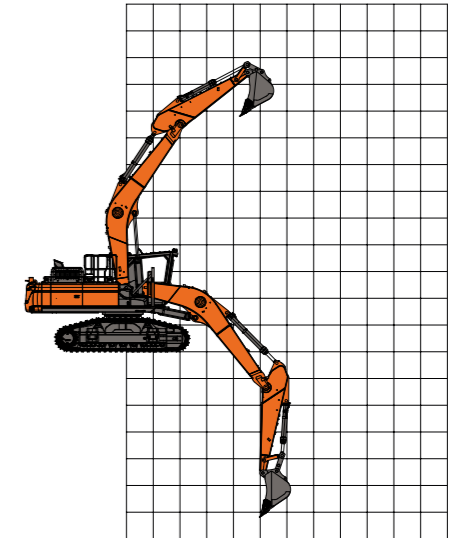
DIMENSIONS



Boom Type	6.245 m (20' 6")	
Arm Type	3.1 m (10' 2")	
A	Shipping Length	10,960 mm (35' 11")
B	Tail Swing Radius	3,560 mm (10' 4")
C	Tumbler Distance	4,010 mm (13' 2")
D	Track Length	4,965 mm (16' 3")
E	Countweight Clearance (w/o Grouser)	1,420 mm (4' 8")
F(Boom)	Shipping Height	3,571 mm (11' 9")
F(Hose)	Shipping Height	3,690 mm (12' 1")
G	Shipping Width	3,560 mm (11' 8")
G'	Shipping Width (narrow)	-
H	House Width	3,575 mm (11' 9")
I	Cab Width	1,010 mm (3' 4") / **1,140 (3' 9")
J	Shoe Width	700 mm (2' 4")
K	Undercarriage Width	3,600 mm (11' 10")
L	Height Over Cab	3,365 mm (10' 0") / 3,675 (12' 1")
M	Cab Height Above House	845 mm (2' 9") / 1,155 (3' 9")
N	Track Height (w/o Grouser)	1,190 mm (3' 11")
O	Car Body Clearance (w/o Grouser)	760 mm (2' 6")

** Oregon Cabin

WORKING RANGES



Arm Type	mm	3,100
Max. Digging Reach	mm	10,670 / * 10,670
Max. Digging Depth	mm	7,015 / * 5,950
Max. Digging Height	mm	10,340 / * 11,700
Min. Swing Radius	mm	4,230 / * 3,005

* High Life

We are **DEVELON**

We trace our roots to 1937 as one of Korea's first large scale machine plant. Throughout time we have consistently delivered exceptional products and solutions.

DEVELON is a bold name that reflects our core ambition to continue developing onwards and leaving behind a positive footprint in our world. Moving forward, we seek to be part of our customers and partners' endeavor to build a better world.

Powered by **Innovation**



©2025 HD Hyundai Infracore. All rights reserved.
HDIPBE-01-2507

Certain specification(s) are based on engineering calculations and are not actual measurements. Specification(s) are provided for comparison purposes only and are subject to change without notice. Specification(s) for your individual Develon equipment will vary based on normal variations in design, manufacturing, operating conditions, and other factors. Pictures of Develon units may show other than standard equipment

develon-ce.com

